

Installation Manual for eFoto2.2 ® software and SKT03

Computer requirements

Processor min. 800MHz
Windows 7/8/10 (32/64 bits) / XP / Vista (32/64 bits)
512 MB RAM (advisable: 1GB)
50 MB free space on hard disk
2 x USB 2.0 gate
DirectX 8.1, 9.0 or higher



GSL NV /SA
Langstraat 13
3384 Glabbeek (Attenrode)
Belgium
E-mail info@gsl.be
BE: 016 779367
NL: 085 2082418
FR: 01 70612711
EU: +32 16 779367

1. Installing the software on the PC

Start "setupeFoto2.2.exe".

It is advisable to close all active programs first.

On the first screen of the Setup (Fig A) you can select one of the available languages for the program. Then start the 'Setup Wizard' (Fig B) and respond to the directions on the screen.



Fig A



Fig B

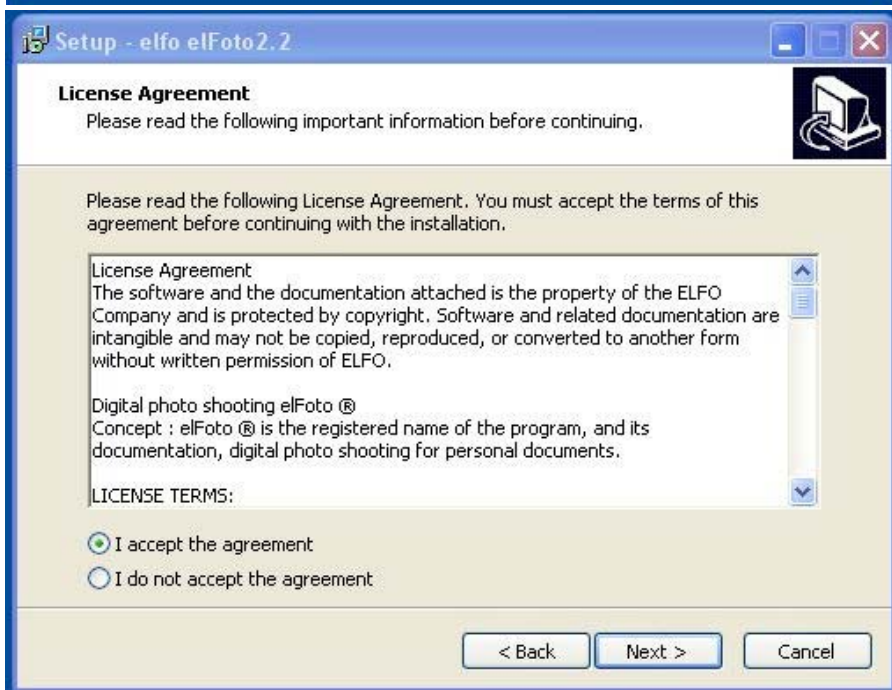


Fig C

On the screen "License Agreement" (Fig C) tick "I accept the agreement" to continue the installation. By clicking 'Next' you agree completely with the licence conditions, as shown below,

License Agreement

The software and the documentation attached is the property of the ELFO Company and is protected by copyright. Software and related documentation are intangible and may not be copied, reproduced, or converted to another form without written permission of ELFO.

Digital photo shooting n **eIFoto**®

Concept: **eIFoto**® is the registered name of the program, and its documentation, digital photo shooting for personal documents.

LICENSE TERMS:

1. This license agreement is an agreement between the user and the ELFO Company.
2. The ELFO Company grants you a non-exclusive right to use this **eIFoto**® software indefinitely and for the purposes specified in the documentation.
3. The license is granted for use of the software on one computer. Each additional computer system will be considered as an attempt to distribute the program illegally.
4. Copying **eIFoto**® software or documentation is prohibited. You may only make backups. All the copies must be marked.
5. The program is described for use with the cameras specified in the documentation or for loading images from other sources and further processing. The software is licensed, not sold. The ELFO Company reserves all rights to this software. ELFO confers only the right to use a copy of the software in combination with certain hardware.
6. It is prohibited to copy, modify, rent, lend, or transfer in whole, in pieces or copies. It is forbidden to attempt to decode, recompile and use the source code of the program.
7. The ELFO Company can allow the transfer of a license and the rights attached to the program, to another user who installs the program on another computer, provided the transfer of all copies, upgrades, prior versions of the software along with the documentation and licensing. Such transfer of ownership must be submitted to ELFO to obtain a License Key for the new user.
8. The ELFO Company warrants that the media on which the Software is delivered is free from defects in material and manufacturing.
9. After purchasing the program, prior to registration, can cancel the purchase subject to payment of the shipping costs. In the demo program there will be company information added to each demo photo.
10. The ELFO Company offers no explicit or implicit warranty.
11. The ELFO Company shall not be liable for any economic loss, loss of data, work interruptions or other consequences of the use of the program. It does not warrant that the functions contained in the Software will meet your requirements and that deficiencies identified during the use will be removed.
12. The ELFO Company will endeavour to update the software developed in accordance with the changes in the regulations regarding the parameters of pictures for documents. All errors detected by the user must be notified to the company ELFO, for adaptation in future updates.
13. Each program is provided with a serial number, necessary for the execution of the registration procedure. The registration procedure for eIFoto® program is described in the documentation. During registration, the program is assigned to a particular operating system and hardware.

© ELFO 2006 - 2014

CONTACT

ELFO Jan Tulikowski
91-495 Lodz
Zgierska 231D
tel:+48 42 658 26 01, +48 42 658 83 44
fax:+48 42 658 81 56
www.elfo.com.pl
e-mail: *michallm@elfo.com.pl*

After accepting the Licence Agreement follow the instructions on the next screens of the automatic installation program.

The installation procedure is ready after clicking 'Finish' on the next screen (Fig D).

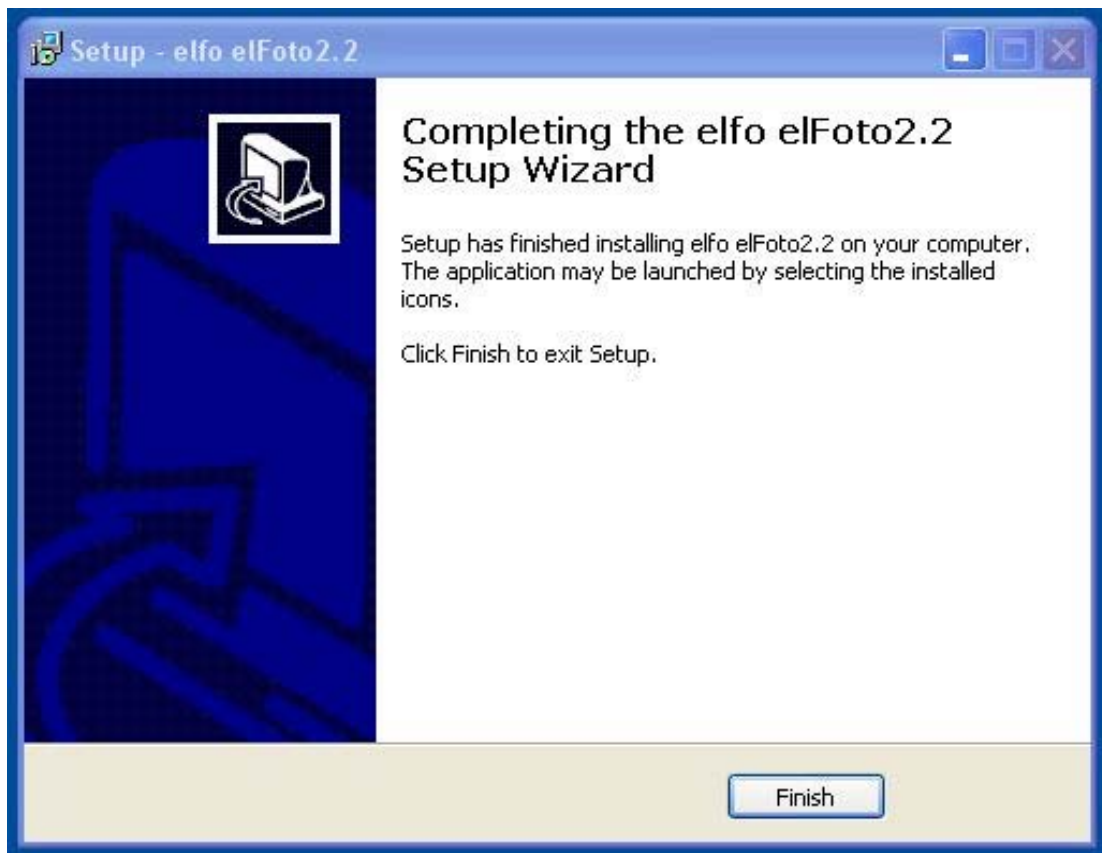


Fig D

You need to reboot the computer to start the program.

2. Mounting

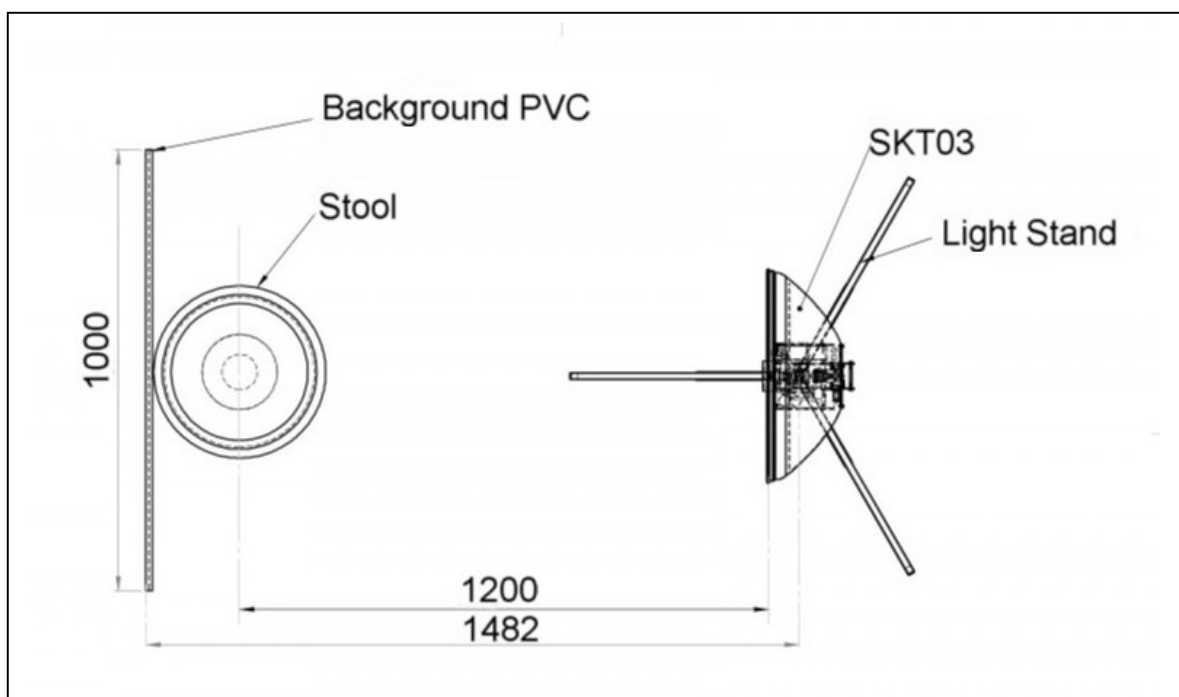
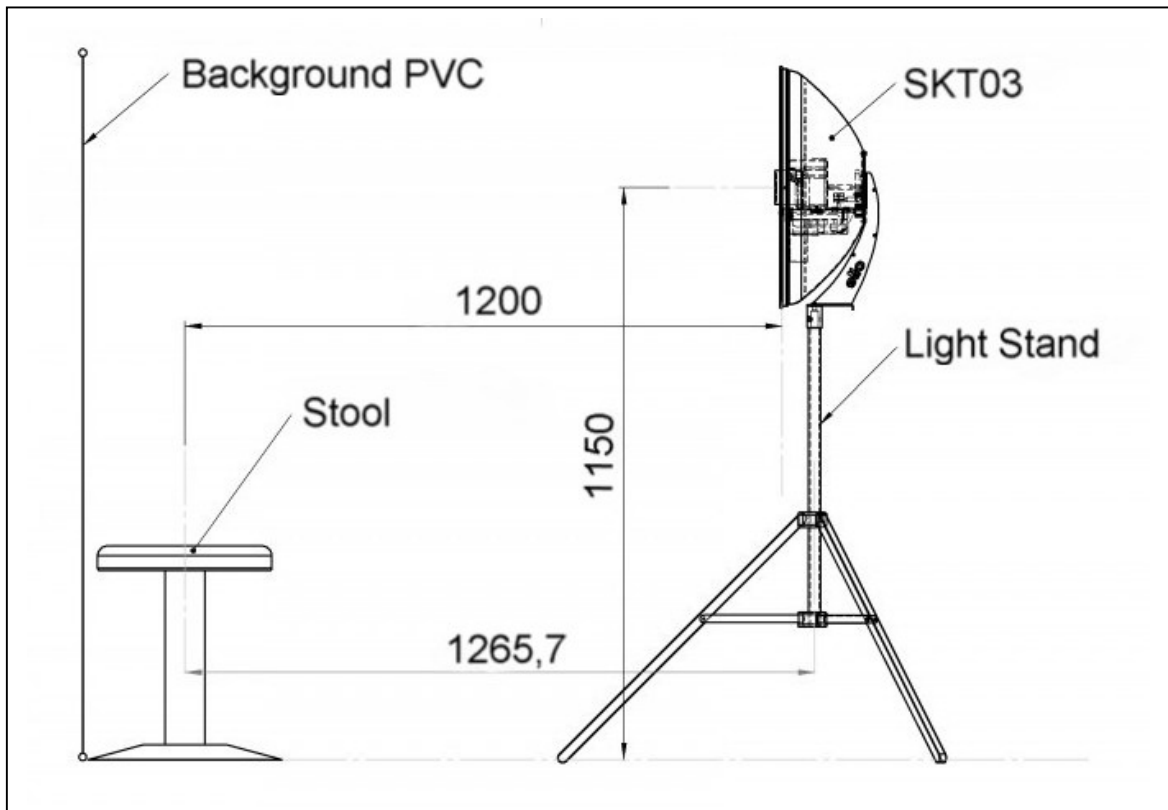
The SKT03 needs to be set up according to the directions on the picture below.

To set the correct illumination, it is important to measure the distance between the face and the white front panel of the SKT03.

A distance of 1,20 m or 1,30 m is advisable (max. 1,70 m).

After starting the program, the distance is shown in the left column on the screen (Fig J – under item 3).

While setting up or changing the distance, you can zoom in or out by turning the lens in front, so the person's face is shown correctly.



3. Starting the program

Connect the STK03 to the electrical power and the PC with the USB cord (Fig E).
Switch of the apparatus on ' I '. A small red control LED beneath the camera lens is highlighted (Fig F).



Fig E



Fig F

Start the program with:

- "elFoto2" in the Windows Start menu (Fig G) (Windows button)
- The button on the desktop
- The file "elFoto.exe" (directory C:\elfo\elFoto2.2).

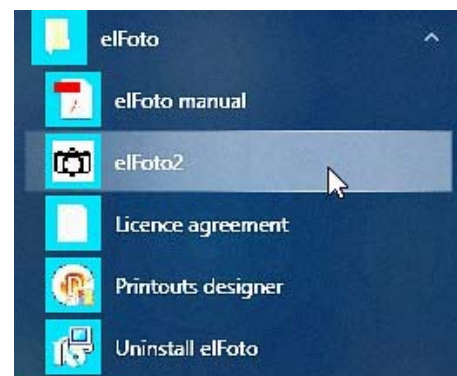


Fig G

On the first screen after starting up (Fig H) you need to type your company data for the "Exif" file.

These data can always be altered later on.



Fig H

When an error message (Fig I) about the connection of the camera appears, you need to check if the USB 2.0 cord is connected correctly.

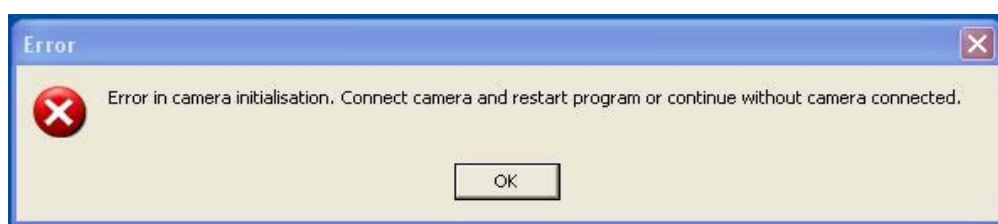


Fig I

The 'DEMO-version' of the program is now ready for testing (Fig. J).

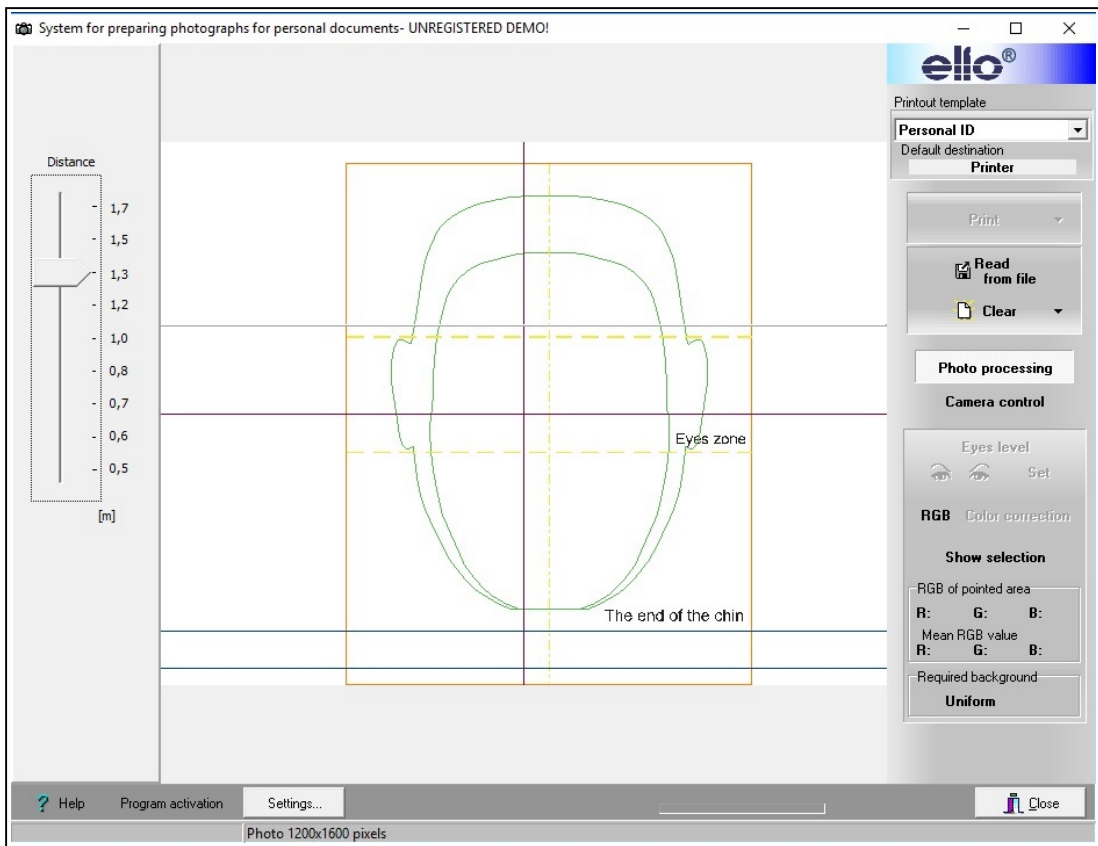


Fig J

4. Activating the programme

For a complete functionality, the program needs to be activated by the button on the left below 'Program activation' (Fig J).

When the program has not been activated, the pictures cannot be used by the text on top of the image.

The 'Computer ID number' is a unique number coupled with the computer; this number is installed in the operating system and shown on the screen (Fig K).

This number, together with the serial number of the purchased program and the data of the end user, has to be e-mailed to info@gsi.be.

After checking the data of the purchase your activating code will be forwarded to you.

Keep the activating code in a safe place if you should have to install the program again on THE SAME COMPUTER (for example in case of a forgotten password to adapt the user settings, ...).

Enter the Activation Code and the Serial number (Fig K) in the correct fields and press 'Save'.

Take care not to make mistakes inserting these data.

After a successful activation, 'DEMO' will no longer be visible in the top bar and the button "Program activation" will not be shown at the bottom.



Fig K

5. User settings

Configuring and activating the personal user settings with the button “Settings” bottom left.

Accessing these setting requires a password (Fig L).

It is advisable to change the standard password in the screen ‘User settings’ (Fig M), so as to safeguard your personal setting from unwanted changes by third parties.

Write down this password and keep it in a safe place.

If you have forgotten your password and can't find it you must install the program again in order to be able to change the user settings.

"Password for Setting"
Type the standard password: elfo
(small characters).



Fig L

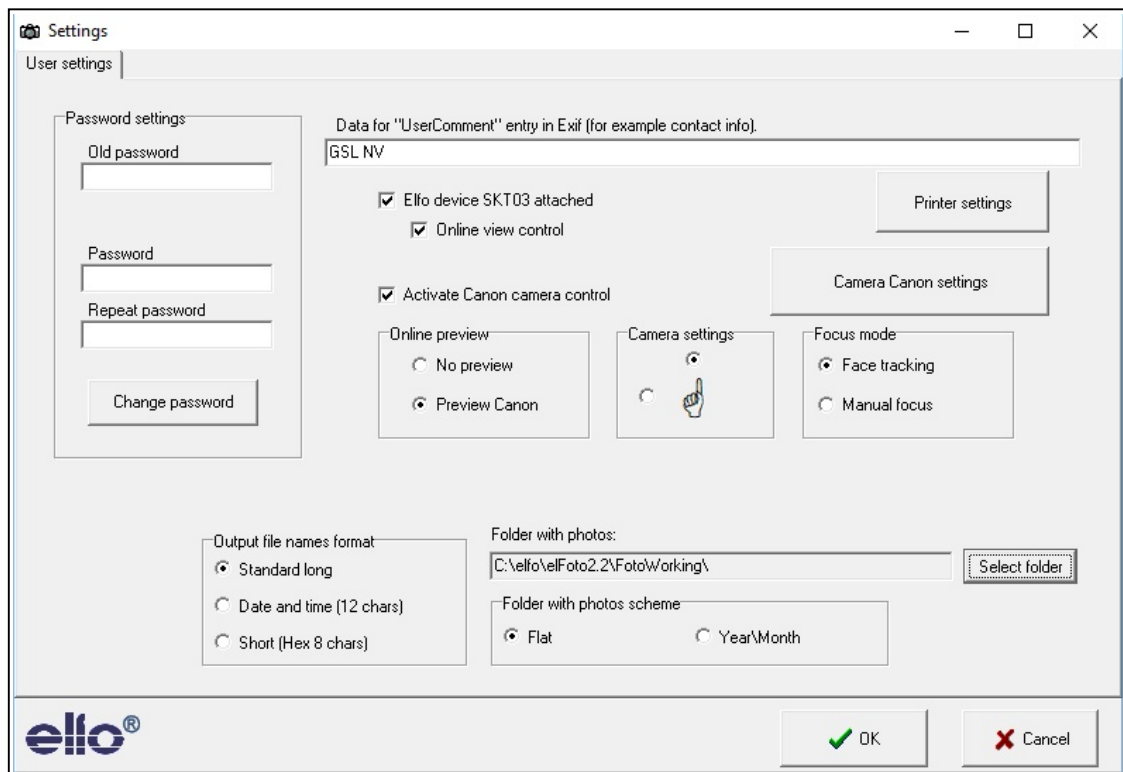


Fig M

User Settings (Fig M)

- “Elfo device SKT03 attached” and “Online view control” need to be ticked.
- “Activate Canon camera control” needs to be ticked.
- ”Camera settings”: for frontal passport pictures, select the top choice; the hand points upwards.
- “Online preview”: select “Preview Canon”
- “Focus mode”: select “Face tracking”
- “Output file names format”: select “Standard long”
- “Folder with photos scheme”: select “Flat”
- “Folder with photos”: name an existing directory and folder in which to file pictures !
This folder has to be created in Windows beforehand !
The programme is not able to create a folder,
- Then click button “Camera Canon settings”
Remark: check the connection of the SKT03 when you get the error message:
“Camera not in mode remote control”

6. Camera Canon settings

Depending on the make of the built-in Canon camera the settings can be selected (Fig N).

- "Online mode" : select standard Mode 2
(Change into Mode 1 if a problem occurs in Mode 2)
- "External flash connected: to be ticked

Experts only:

- Select between the miscellaneous settings for the optional subjects
- Eventually adjust white balance and picture style
- Eventually choose: "On start initialise camera with saved parameters" to be ticked

Remark: for the Canon D1300 camera the 4 selection boxes below right do not function.

Nothing happens while clicking 'Load settings; Save settings, Set Camera and Show camera settings.

After ending the camera settings, click 'Close'.
You return to the screen 'User settings' (Fig M).

Then click "Printer settings".

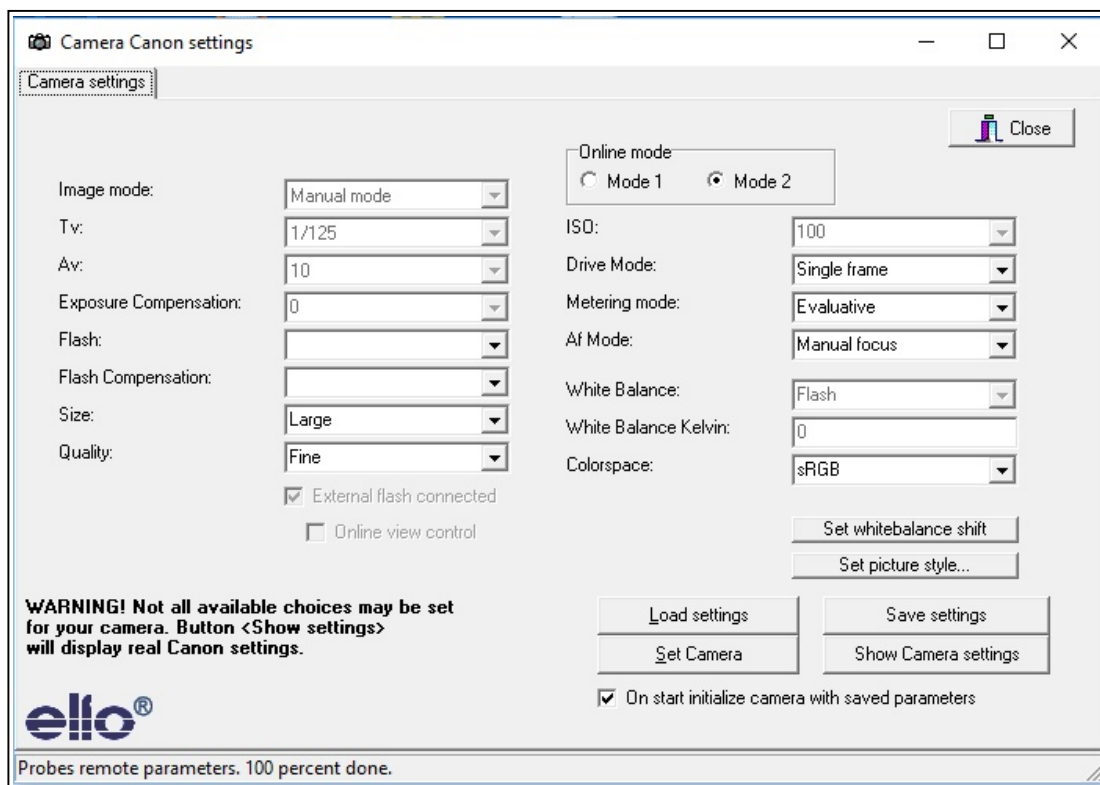


Fig N

7. Printer settings

Choose the elFoto Standard printer and paper format.

If there is need to use special photographic printers 100x150 mm like Canon Selphy series, prior install printer, then, select Printer settings and proper printer. Paper format bordered 100x148 mm, Orientation vertical

Confirm with 'Apply changes'.
Return to the screen 'User Settings' (Fig M).

Press 'OK' to save all User Settings.
The start screen appears (Fig J).
Click 'Close' right bottom to finish the 'elFoto' program.

8. Printouts designer - Design Template Printouts

By means of the separate program “elFotoDruk.exe” (included) different template printouts can be made: Personal ID for 1, 2, 4, 6 pictures (format and size dependant on choice).

Start the program:

- “**Printouts designer**” in the Start menu (Fig G) of Windows (Windows button).
- “**elFotoDruk.exe**” (directory elFoto2.2).

On top and in the middle of the screen (Fig O) appear ‘Available Templates’ with below the picture with chosen position and to the left the print data.

Unwanted templates can be deleted with ‘Delete template’ and simple new designs.

Designing a new template:

Click ‘New Template’ (top left).

Select the desired number of pictures in a row (f.e. 2) and in column (f.e. 4, 6, ...) and total width and height of the print.

If necessary select the destination of the print: Printer, JPEG file and the resolution,

In the box ‘Template name’ type a unique name for example ‘Personal ID’ and click ‘Save changes’; the name of the newly made template is shown in the box ‘Available Templates’ (top, middle).

Repeat this action for each additional new template

Under ‘Available templates’ each newly made template can be checked: settings and example of the picture are shown.

To end the program click ‘Save changes’ again, then ‘End program’.

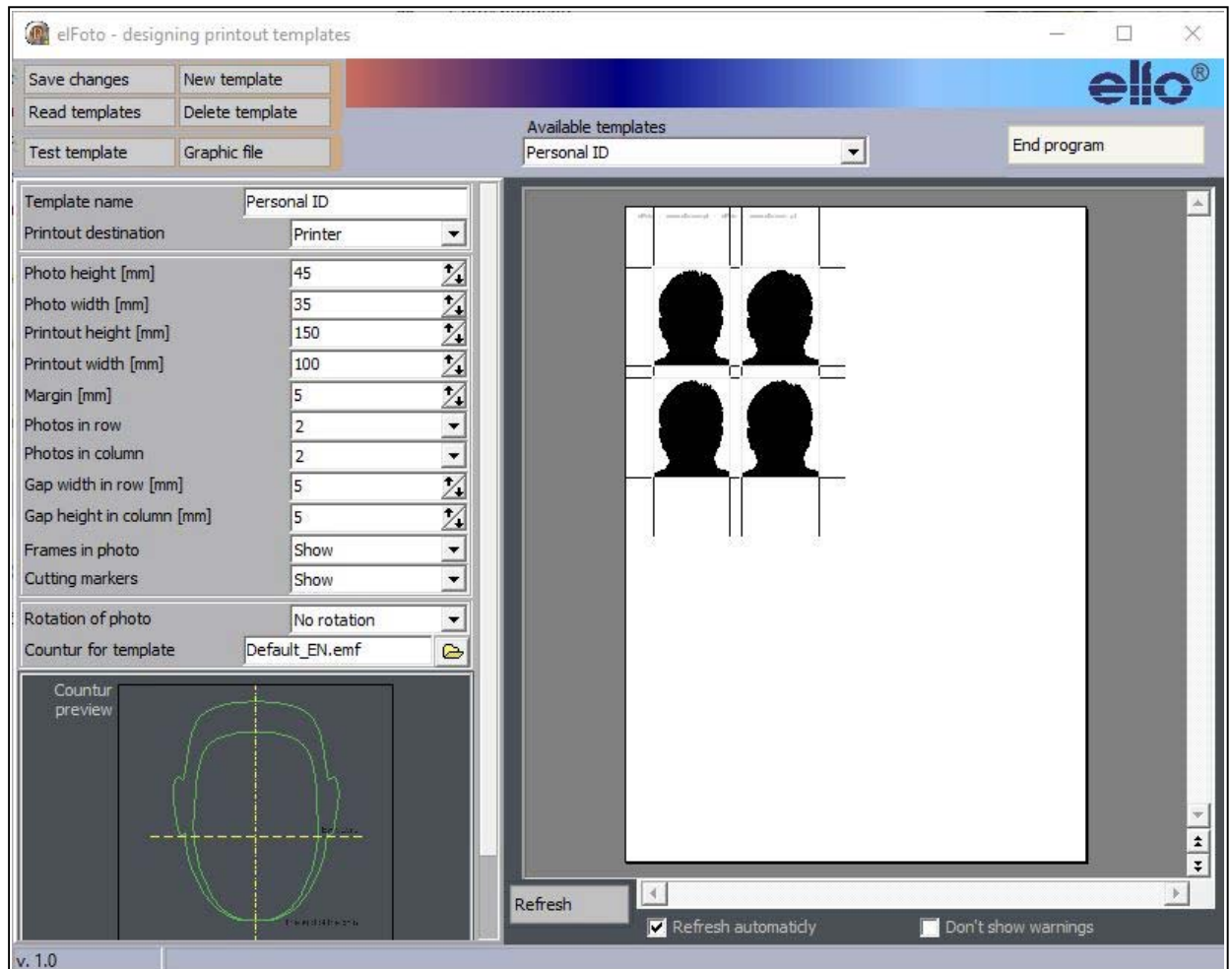


Fig O

Installing is finished.

The program “elFoto.exe” is, after rebooting, ready for taking pictures.

See “elFoto – User manual”.